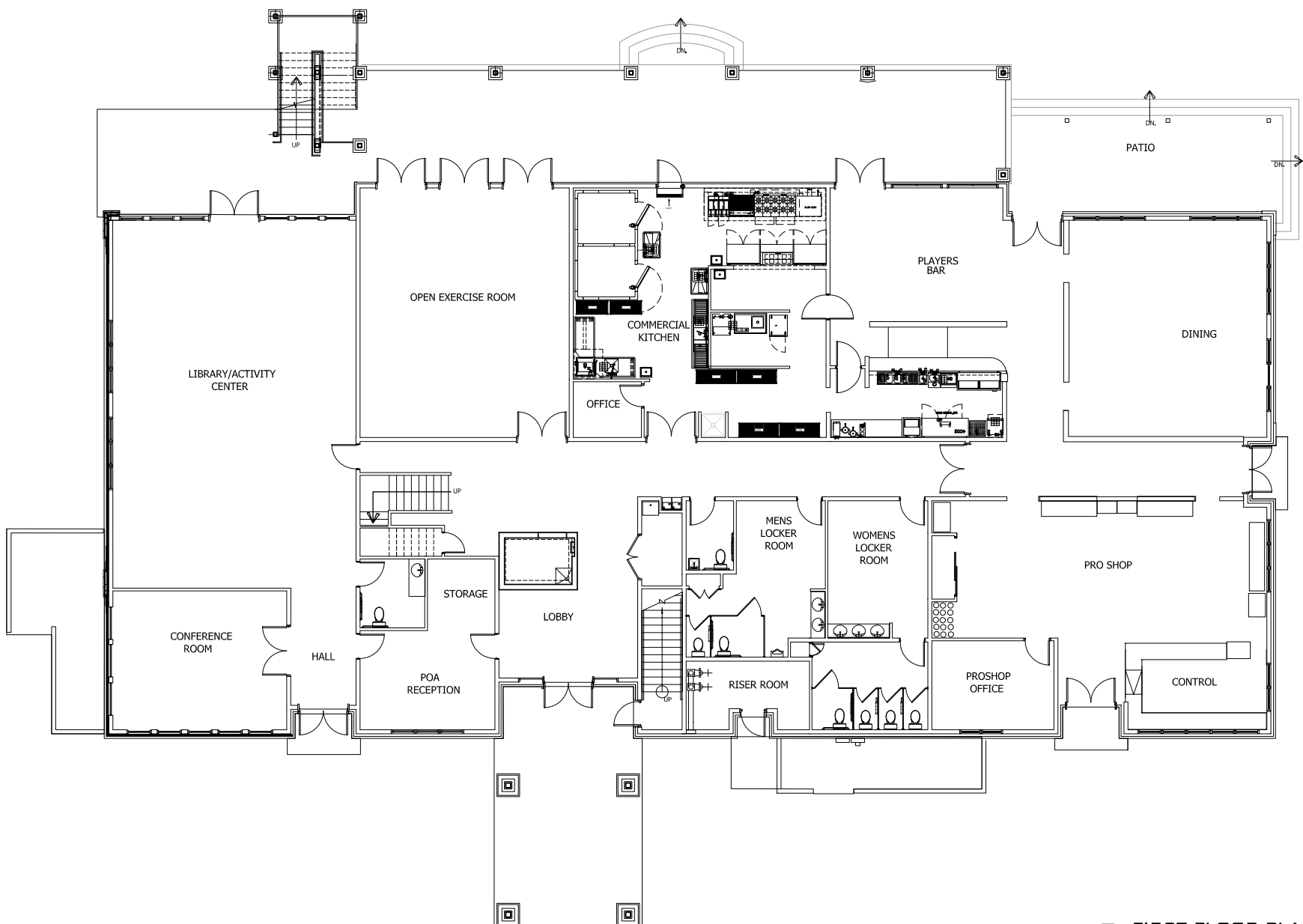


A SECOND FLOOR PLAN
SCALE: 3/16" = 1'-0"

Second Floor: This room is what will replace the upstairs of our current clubhouse. Seated capacity for this space is approximately 240 persons, or more than twice what we currently have. There is a full catering kitchen to serve this room. The space beyond the double doors is the covered deck, looking out on the Intracoastal Waterway. Note the outdoor stairway leading down to the deck below, and the two interior stairways leading down to the lobby, plus the elevator at the top of the interior stairs.

First Floor: There is a covered portico leading into the lobby. The POA Reception will be set up as an office, and across the hall from it is the conference room, which will be where POA and LFCCI meetings take place. It could also be used for planning meetings for the many social activities staged here in Lockwood. Note the outside entrance between these two rooms. The Library/Activity room will be lined with bookcases, and include tables for playing cards or other games. Just to the right will be the site of our new Fitness Center, with a view to the Intracoastal. Arguably the most exciting part, just to the right of the Fitness Center is the professional kitchen and bar and dining areas next to it. There would be room for about 50 diners in the dining room, plus at least 20 more in the bar area. There is also the potential for outdoor seating on the patio and the lower deck, facing the water. It is hoped that these facilities will enable us to have a restaurant attractive to all our residents. Perhaps dinners at the weekend? Sunday brunch? The rest of the building will be for golf course operations, including the pro shop and office space. The rooms labeled "Locker Room" will probably not include lockers, but will be spacious restrooms.

~Barbara Taraska



A FIRST FLOOR PLAN
SCALE: 3/16" = 1'-0"